
Clinical Trial

Conducted at
Washington Hospital Center,
Washington DC
Nov. 2009

Test 1



BetterShield and 3M N95 mask



Mannequin head (BetterShield + 3M N95) sprayed with "glo-germ" type ink, simulating a patient event such as sneeze, cough or spray.

Test 1 Results



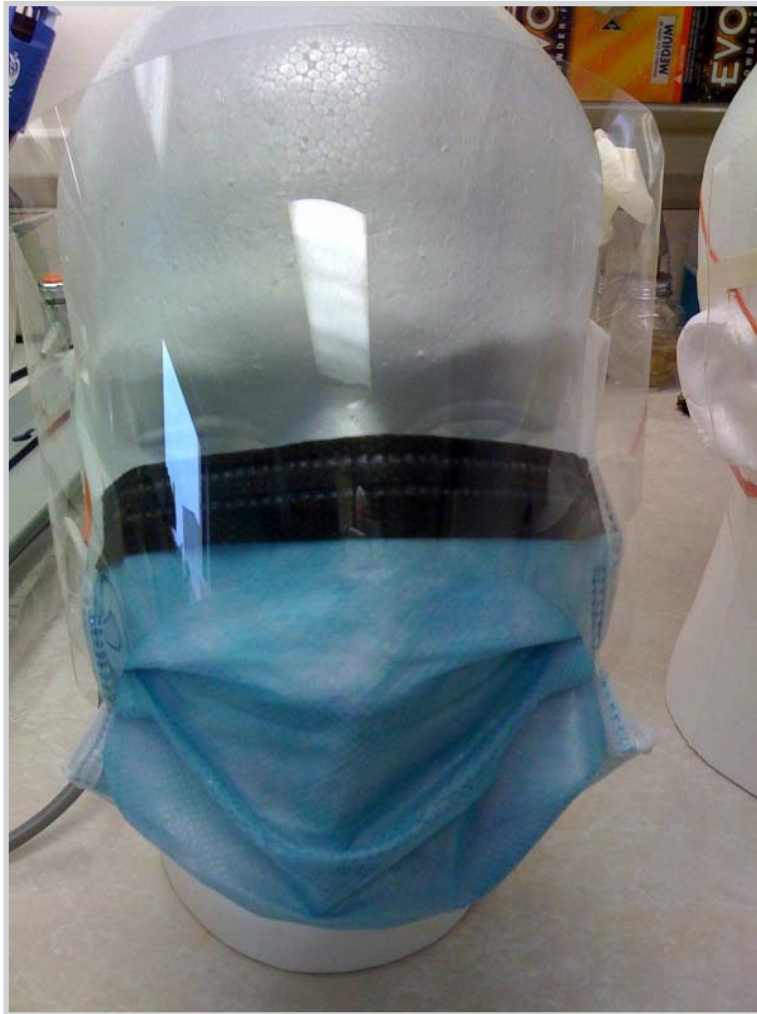
Mask and Shield removed, note the qty of ink visible.

Test 1 Results

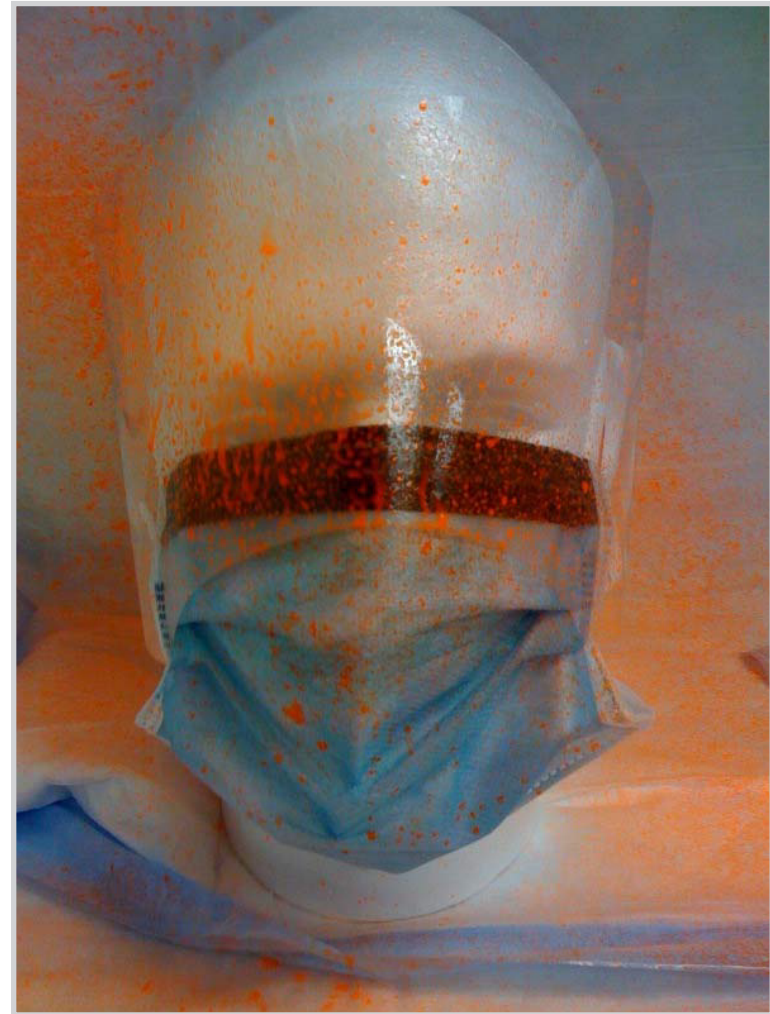


Mask and Shield removed, note the qty of ink visible.

Test 2



Integrated visor / surgical mask (i.e. non-N95)

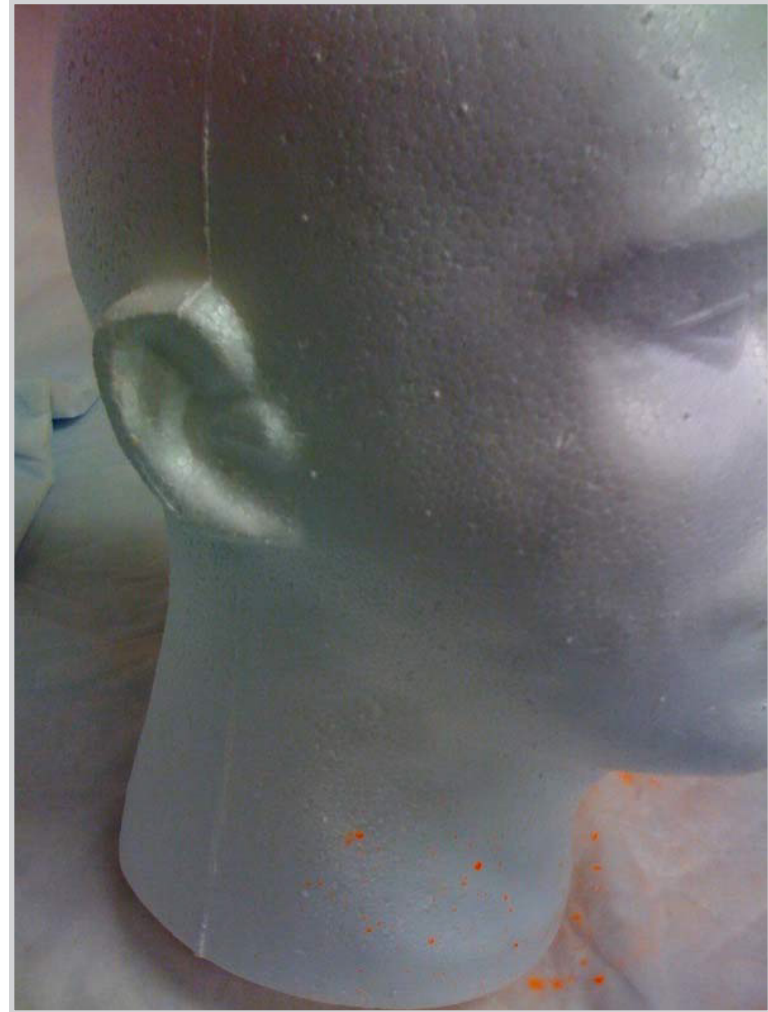


Mannequin head (integrated mask/visor) sprayed with "glo- germ" type ink, simulating a patient event such as sneeze, cough or spray.

Test 2 Results



Test 2 Results



Test 3

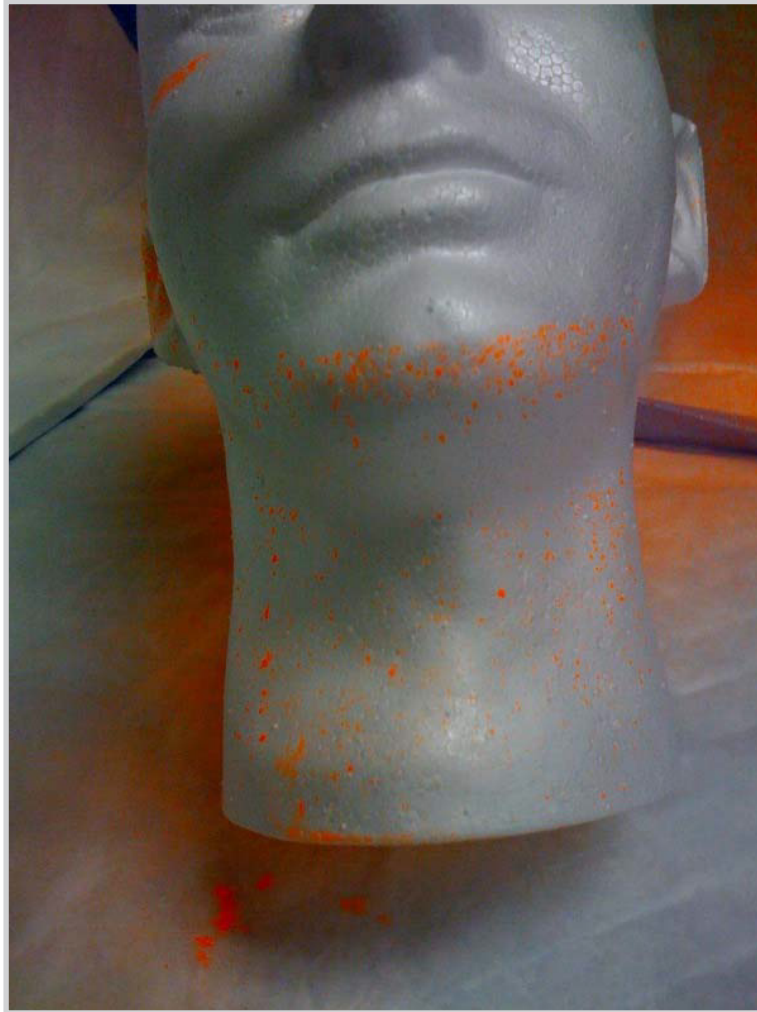


Kimberly Clark Safeview worn in conjunction with 3M 1870 (i.e. frequently a standard operating procedure where N95 masks are required).



Splash image

Test 3 Results



Test 3 Results

